

# Motion Sensor 360 Insert Style



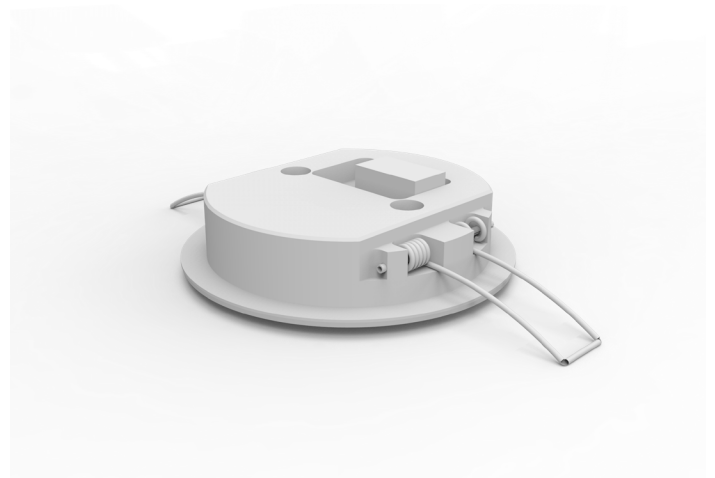
## OVERVIEW

The Axxess Motion Sensor 360 Insert Style supports all motion dependent functions, including lighting, security, occupancy detection and energy management.

Upon detecting people moving in a space, it communicates that event wirelessly on a programmed schedule.

The low-profile bezel is less than 1/8" thick resulting in an unobtrusive and clean looking installation. Utilizing a simple mounting system, the Motion Sensor 360 Insert Style installs in seconds and enables quick removal.

The Motion Sensor 360 Insert Style can be combined with our Wireless Contact Switch to reliably determine occupancy status of a room. This is vital information for a variety of systems, including energy management, helping our environment while improving your bottom line.



# Motion Sensor 360 Insert Style

MSC-C4ZB

## USES

- Energy management
- Security systems
- Automatic lights
- Home & office automation
- Ambient light measurement

## WIRELESS

ZigBee PRO Compatible  
(802.15.4)  
Drivers Downloadable  
Control4 Compatible

## POWER

12-24V DC  
50/60 Hz AC/DC

## MOTION SENSOR

- PIR motion sensor (quad element ambient effect reduction)
- Viewing Angle: 360°
- Effective coverage: 27'+ diameter for 8' ceiling height, longer range for higher ceilings.

## DIMENSIONS

Body:  
ø 2.23" x .5"

Flange:  
ø 3.60"

## DRIVERS

Download from  
[www.axxind.com/dealers/drivers](http://www.axxind.com/dealers/drivers)

## HOW TO ORDER

[axxind.com/dealers](http://axxind.com/dealers)

## COMPLIANCE/APPROVALS

FCC Part 15 | CE

## COLORS

White

## POPULAR APPLICATIONS

Lighting / energy management  
Occupancy detection  
Security

### SENSOR RANGE

