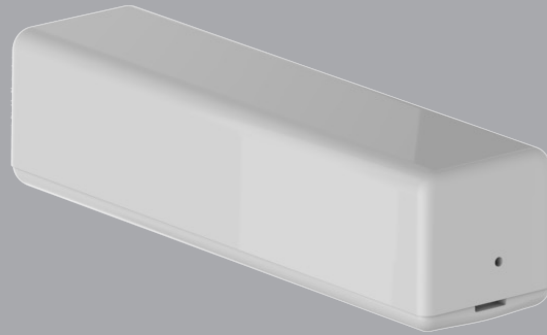


Wireless Contact Sensor



OVERVIEW

The Axxess Wireless Contact Sensor transmits information on whether a door or window is open or closed.

Using a magnetic switch the device transmits two different signals: CLOSED, when the magnet makes contact and OPEN, when the magnet breaks contact. Installation is easy.

The quickest method is surface mount with double sided adhesive, while an “invisible” look is achieved by drilling a hole in the top of the door (or door frame) and sliding the switch into the opening.



Wireless Contact Sensor

USES

- Energy management
- Security systems
- Automatic lights
- Home & office automation

WIRELESS

ZigBee PRO (802.15.4)
Control4 driver downloadable

COMPLIANCE/APPROVALS

FCC Part 15 | CE

COLOR

Black | White

WHAT'S IN THE BOX

- Axxess Contact Sensor
- Small magnet case
 - 2.675" x .338" x .338"
- Disk magnet
 - .5" Ø x .0635"
- Cylinder magnet
 - .236" Ø x .787"
- Mounting brackets
- Wire harness for external contact

POWER & BATTERY

- 3.6 VDC lithium battery
- Low battery notification
- Over three year battery life

TEMPERATURE SENSOR

Accurate to +/- 1°C Operating range of -40°C to 70°C

MAGNETIC SWITCH

- Magnetic switch normally open (NO)
- Closed when in magnet range
External contact connection

DIMENSIONS

W 0.675" x L 2.675"
W 1.71cm x L 6.79cm

MOUNTING OPTIONS

- Drill & Hide - Drill a 7/8" hole into door or frame and slide switch inside
- Double sided adhesive (Magnet mounts opposite with adhesive)

DRIVERS

Download from
www.axxind.com/dealers/drivers

HOW TO ORDER

axxind.com/dealers